

Silk

image shown below: 3x12 cashmira



*Inspired By Nature,
Made Possible By...*

CANCOS
TILE AND STONE

GLASS TILE



SILK BIANCO • 3x12

MIDTOWN WHITE • 3/4 x 3/4

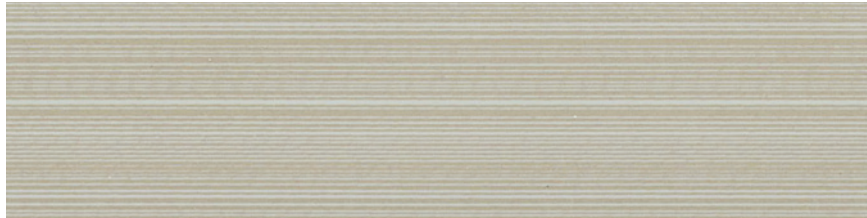
GLA SIBI 312



Bianco

| 3 x 12 |

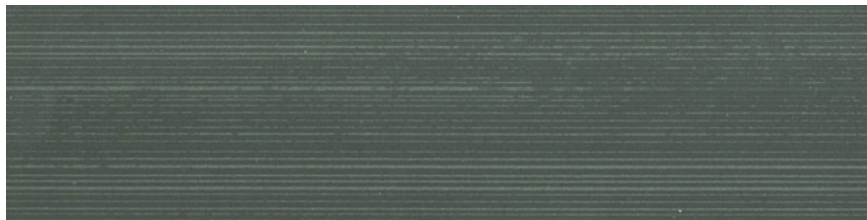
GLA SICA 312



Cashmira

| 3 x 12 |

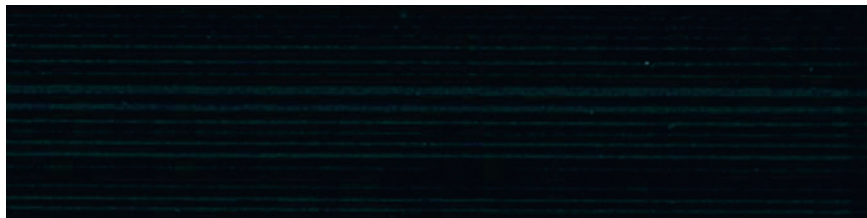
GLA SIGR 312



Grigio

| 3 x 12 |

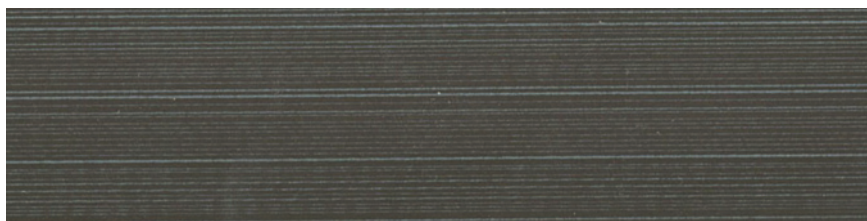
GLA SINE 312



Nero

| 3 x 12 |

GLA SIVI 312



Visone

| 3 x 12 |

COMMERCIAL USAGE

	INTERIOR			EXTERIOR	
	RESIDENTIAL	LIGHT COMMERCIAL	COMMERCIAL	RESIDENTIAL	COMMERCIAL
Floors / Patios					
Walls / Backsplashes	X	X	X	X	X
Countertops					
Pool Decking					
Pool Linings	X	X	X	X	X

Suitable in freezing and non-freezing climates when proper installation methods are followed.

INSTALLATION

Thickness	1/4"
Grout Joint Recommendation	1/8" Approximately

TEST RESULTS

	ASTM#	RESULT
Water Absorption	C373	< 0.01 %
Breaking Strength	C648	> 100 lbs
Scratch Hardness	MOHS	4.0
Chemical Resistance	C650	Resistant

image shown below: 3x12 visone

