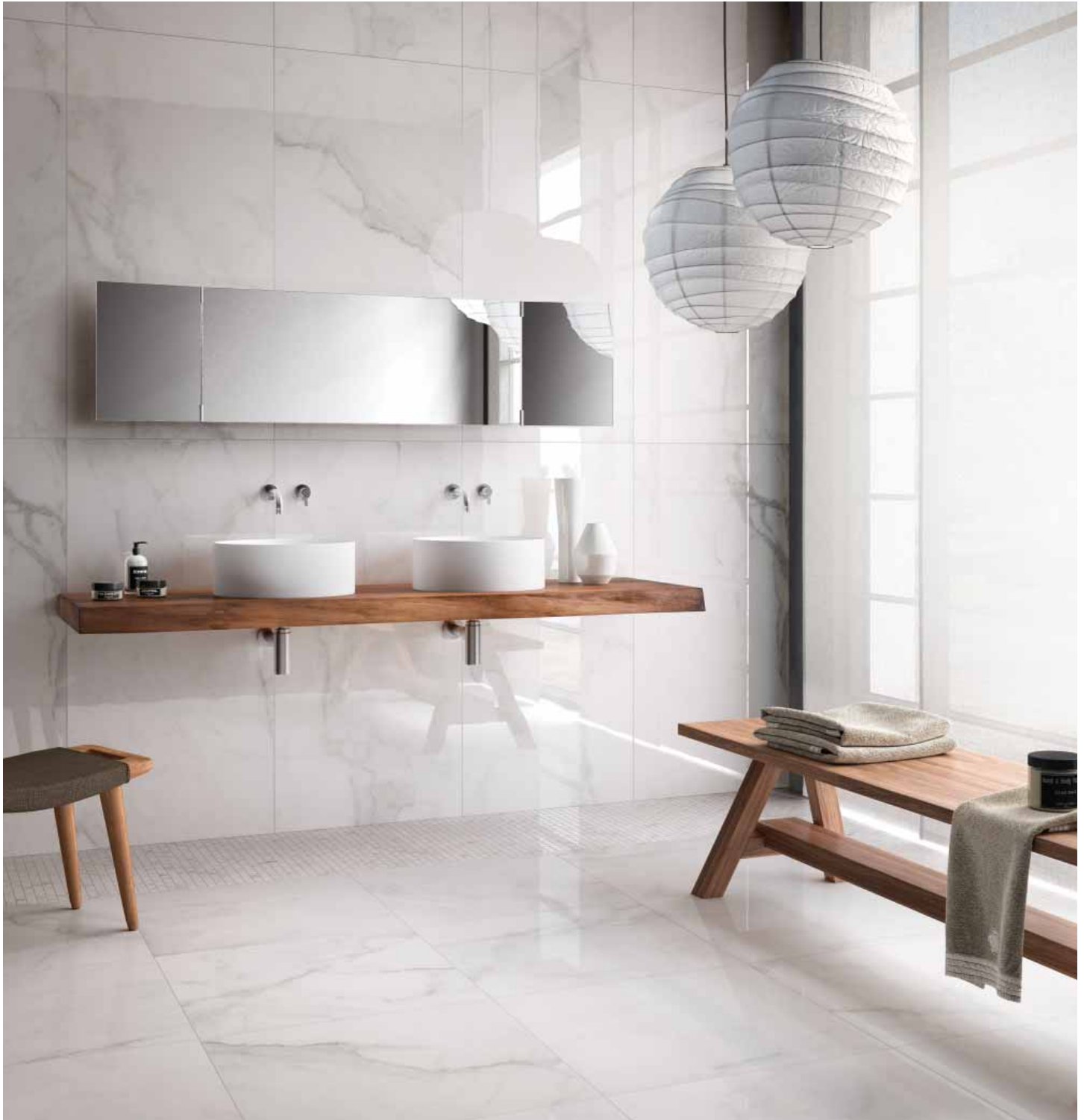


Natural Stone



*Inspired By Nature,
Made Possible By...*

CANCOS
TILE & STONE

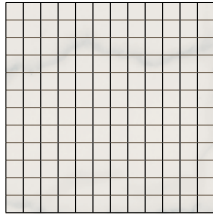
RECTIFIED PORCELAIN STONEWARE



CALACATTA • 24x48, 1x1 mosaic

Calacatta

ELE NSCA MOS11



H mosaic | 1 x 1 |

ELE NSCA BN424
ELE NSCA BN424L



P H bullnose | 4 x 24 |

ELE NSCA 1224
ELE NSCA 1224L



30 x 60 (cm)

P H | 12 x 24 |

ELE NSCA 24
ELE NSCA 24L



60 x 60 (cm)

P H | 24 x 24 |

Special Order Sizes



60 x 120 (cm)

P H | 24 x 48 |

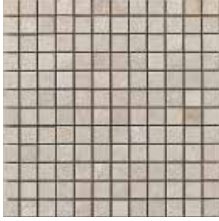
P - available in *POLISHED* finish

H - available in *HONED* finish

RECTIFIED PORCELAIN STONEWARE



ELE NSCH MOS11



mosaic | 1 x 1 |

ELE NSCH BN424



bullnose | 4 x 24 |

ELE NSCH 1224



30 x 60 (cm)

| 12 x 24 |

ELE NSCH 24



60 x 60 (cm)

| 24 x 24 |

Special Order Sizes



45 x 90 (cm)

| 18 x 36 |



60 x 120 (cm)

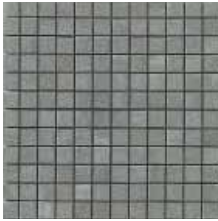
| 24 x 48 |

RECTIFIED PORCELAIN STONEWARE



COGNE • 12x24

ELE NSCO MOS11



mosaic | 1 x 1 |

ELE NSCO BN424



bullnose | 4 x 24 |

ELE NSCO 1224



| 12 x 24 |

30 x 60 (cm)

ELE NSCO 24



| 24 x 24 |

60 x 60 (cm)

Special Order Sizes



| 18 x 36 |

45 x 90 (cm)



| 24 x 48 |

60 x 120 (cm)

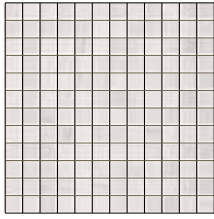
RECTIFIED PORCELAIN STONEWARE



DOLOMITE • 4x12, 12x24, 24x48, 1x1 mosaic

Dolomite

ELE NSDO MOS11



H mosaic | 1 x 1 |

ELE NSDO 1224
ELE NSDO 1224L



30 x 60 (cm)

P H | 12 x 24 |

ELE NSDO 412
ELE NSDO 412L



P H | 4 x 12 |

ELE NSDO 24
ELE NSDO 24L



60 x 60 (cm)

P H | 24 x 24 |

ELE NSDO BN424
ELE NSDO BN424L



P H bullnose | 4 x 24 |

ELE NSDO 2448
ELE NSDO 2448L



60 x 120 (cm)

P H | 24 x 48 |

P - available in *POLISHED* finish

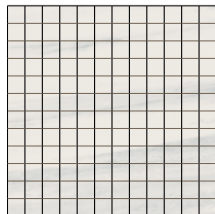
H - available in *HONED* finish

RECTIFIED PORCELAIN STONEWARE



PALISSANDRO • 24x24, 1x1 mosaic

ELE NSPA MOS11



H mosaic | 1 x 1 |

ELE NSPA BN424
ELE NSPA BN424L



P H bullnose | 4 x 24 |

ELE NSPA 1224
ELE NSPA 1224L



30 x 60 (cm)

P H | 12 x 24 |

ELE NSPA 24
ELE NSPA 24L



60 x 60 (cm)

P H | 24 x 24 |

Special Order Sizes



60 x 120 (cm)

P H | 24 x 48 |

P - available in POLISHED finish

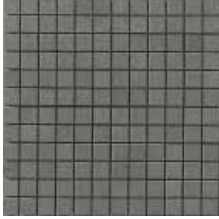
H - available in HONED finish

RECTIFIED PORCELAIN STONEWARE



SERENA • 24x24

ELE NSSE MOS11



mosaic | 1 x 1 |

ELE NSSE BN424



bullnose | 4 x 24 |

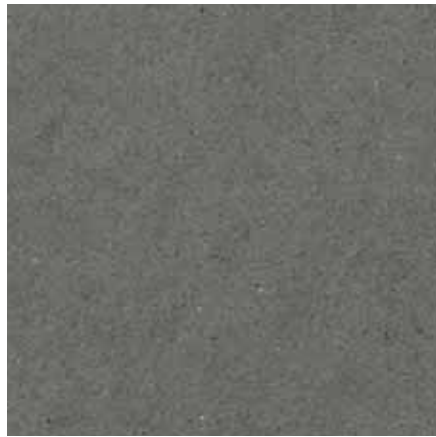
ELE NSSE 1224



| 12 x 24 |

30 x 60 (cm)

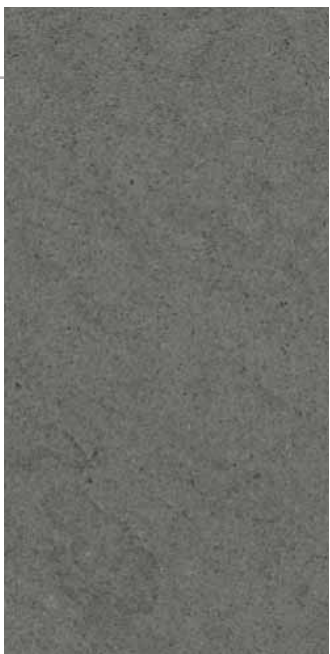
ELE NSSE 24



| 24 x 24 |

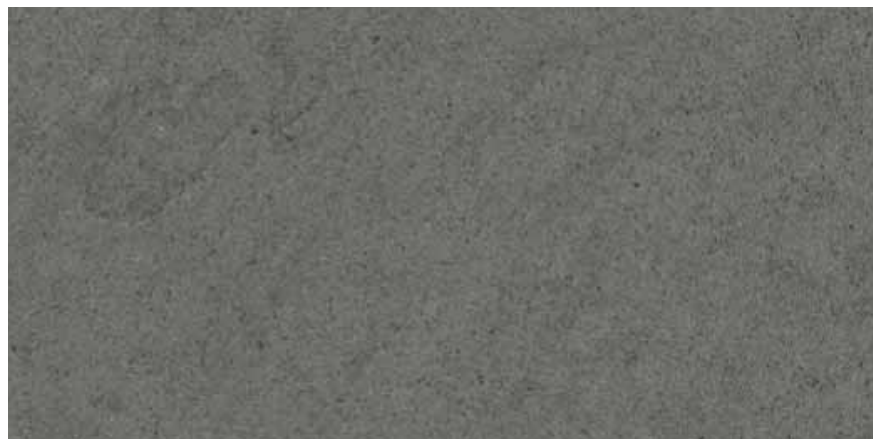
60 x 60 (cm)

Special Order Sizes



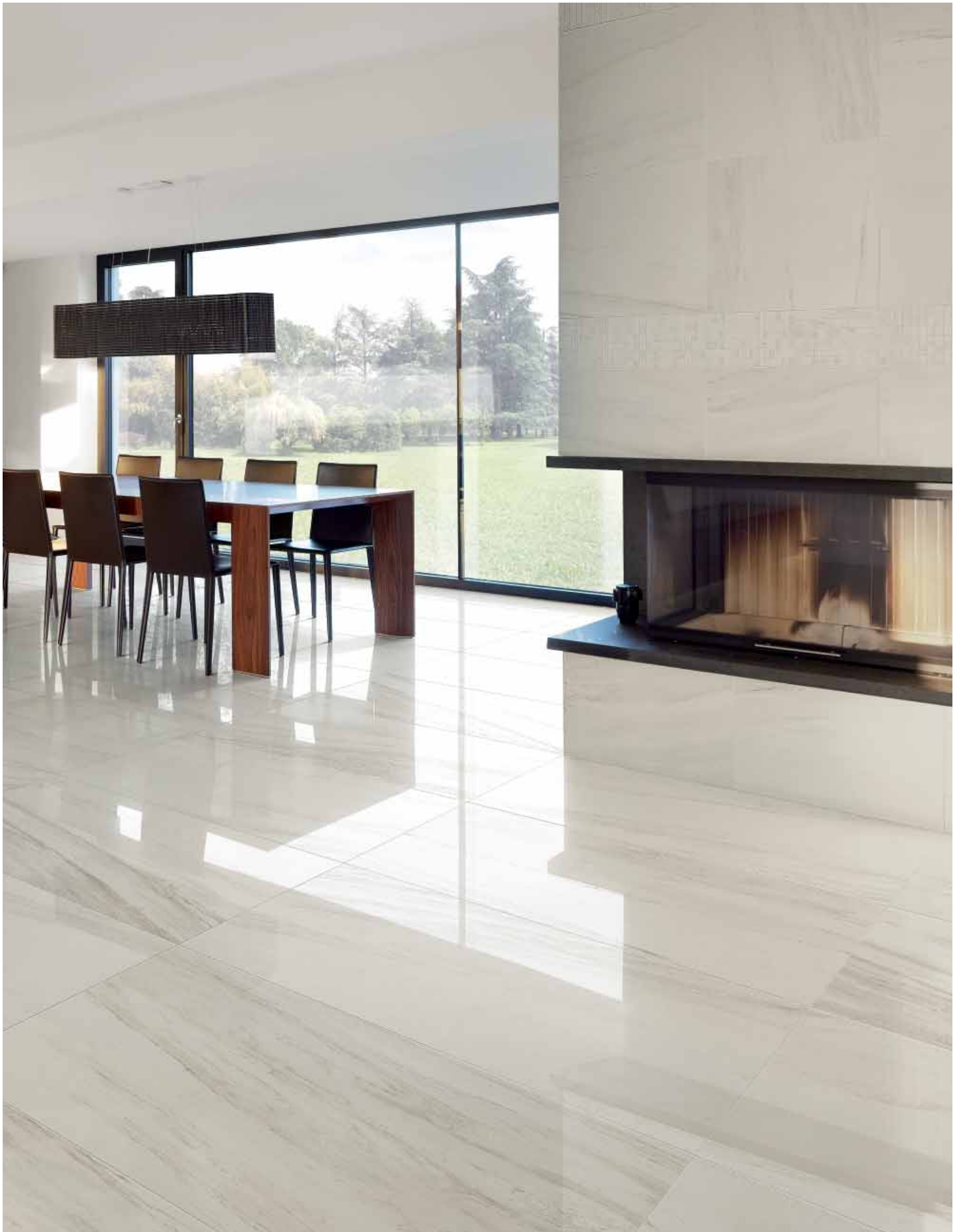
| 18 x 36 |

45 x 90 (cm)



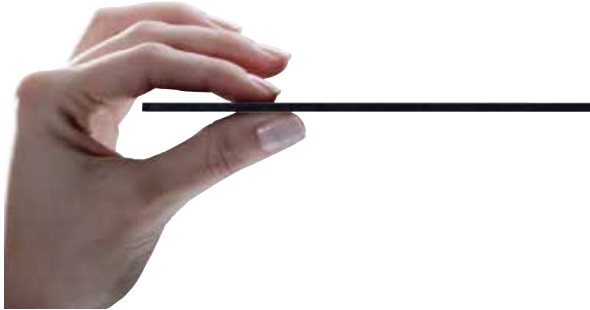
| 24 x 48 |

60 x 120 (cm)



3.5MM THICKNESS

**ALL COLORS AVAILABLE IN
20x40 • 40x40 • 40x120**



20x40
50x100 (cm)

40x40
100x100 (cm)

40x120
100x300 (cm)

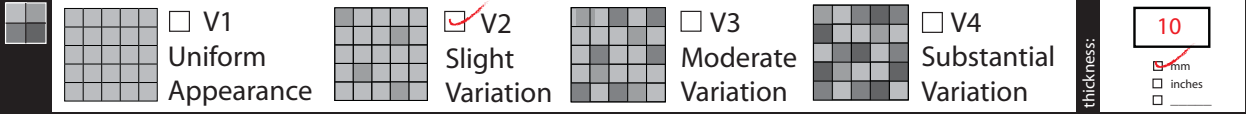
Suggested Applications



Installation Suggestions



Shade Variation



Slip Resistance



	WET		DRY	
	standard*	result	standard*	result
accessible routes	.6	>.6	.6	>.6
ramps	.8		.8	



Values	Tile Classification
0 - 0.50	Questionable
0.50 - 0.60	Conditionally Slip Resistant
> 0.60	Slip Resistant

*Industry Standard/ADA Requirements

DIN 51130	
<input checked="" type="checkbox"/> R9*	3-10°
<input type="checkbox"/> R10	10-19°
<input type="checkbox"/> R11	19-27°
<input type="checkbox"/> R12	27-35°
<input type="checkbox"/> R13	>35°

DIN 51097		
Class	Typical applications	Critical angle
<input type="checkbox"/> A	Barefoot, but mainly dry aisles and walkways, dry changing areas	≥12°
<input type="checkbox"/> B	Shower rooms, pool surrounds, wet changing areas, disinfectant spray areas (plus all Class A areas)	≥18°
<input type="checkbox"/> C	Areas constantly under water, e.g. steps into pools, foot baths, inclined pool surrounds, jacuzzis (plus all Class A&B areas)	≥24°

Scratch Resistance



MOH'S SCALE **6**
UNI EN ISO 10545.6

Mineral

- Talc (Talc)
- Gypsum (Fingernail)
- Calcite (Penny)
- Flourite (Some Marbles)
- Apatite (Knife Blade)

Mineral

- Microline (Glass, Glazed Tile)
- Quartz (Unglazed Porcelain)
- Topaz (Granite)
- Corundum (Ruby)
- Diamond (Diamond)

Industry standard ≤175mm²

Wear Resistance

PEI RATING
UNI EN ISO 10545.7

- Class 1: Walls only
- Class 2: Resid. floors w/minimal abrasive traffic.
- Class 3: Resid. interiors normal use and foot traffic.
- Class 4: Light-medium commercial applications.
- Class 5: Commercial applications.

Stain Resistance

ASTM C1378-04
UNI EN ISO 10545.14 **5**

- Removed after 5 minutes (hot water running)
- Removed by manual cleaning (weak detergent)
- Removed by mechanical cleaning (strong detergent)
- Removed by immersion (24 hrs in suitable solvent)
- Stain not removed

Water Absorption

ASTM C-373
UNI EN ISO 10545.3

<input checked="" type="checkbox"/> Absorbs 0-.5%	<input type="checkbox"/> Absorbs .5-3%	<input type="checkbox"/> Absorbs 3-7%	<input type="checkbox"/> Absorbs 7% +
Impervious Interior/exterior Frost Resistant	Vitreous Interior/exterior Frost Resistant	Semi-Vitreous Indoor use only	Non-Vitreous Indoor use only

Breaking Strength

ASTM C648
UNI EN ISO 10545.4



Industry standard should be greater than 250 lbs or 50 N/MM²

Facial Dimension

ASTM c499-09
UNI EN ISO 10545.02

	Standard	Tolerance	Result
flatness	± 5mm	± .5%	±.5%
thickness	± 6mm	± .5%	±.5%
straightness	± 4.5mm	± .5%	±.5%
squareness	± 5.4mm	± .6%	±.6%
sides L/W	± 1.1mm ± 4.5mm	± .5%	±.5%

Chemical Resistance

ASTM C650
UNI EN ISO 10545.13

Allowances for:

	result
acid	A
bases	A
chemicals	A

Leed Information



REQUIREMENTS FOR COMMERCIAL INTERIORS/NEW CONSTRUCTION

Sustainable Sites

Site selection

- SS CREDIT 1
Heat Island Effect-non roof
Material with a solar reflectant index of at least 29.

Energy & Atmosphere

- EA CREDIT 4
Green Power: Products that optimize energy performance for floors and walls using thermal conductivity. BTU-FT

Indoor Environmental Quality

Low-Emitting Materials-Flooring Systems

- IEQ CREDIT 3.1-7
Green Cleaning: Reducing occupants exposure to hazardous cleaning chemicals.
- IEQ CREDIT 4.1
Low Emitting Adhesives: Products less than 65 G/L VOC
- IEQ CREDIT 4.3
Low Emitting Materials: Flooring systems.

Allowances for:

	1 Point	2 Points
Materials & Resources		
M&R CREDIT 2 Construction Waste Management: Recycling salvaged construction waste in to new reusable materials.	50% <input type="checkbox"/>	70% <input type="checkbox"/>
M&R CREDIT 4.1-4.2 Recycled Content: The sum of post consumer plus 1/2 of the pre consumer reps at least 10-20% of total value of materials.	10% <input type="checkbox"/>	20% <input type="checkbox"/>
M&R CREDIT 5 Regional Materials: Materials manufactured within 500 miles of the project site.	10% <input type="checkbox"/>	20% <input type="checkbox"/>
Innovation in Design		1-5 Points
ID CREDIT 1 Innovation in Design Measurable exemplary environmental performance.		<input type="checkbox"/>

Type:
10mm Rectified
Porcelain Stoneware

Product Line:
Natural Stone

The marketing name for this product is property of Cancos Tile Corp. This same product may be marketed under different names.