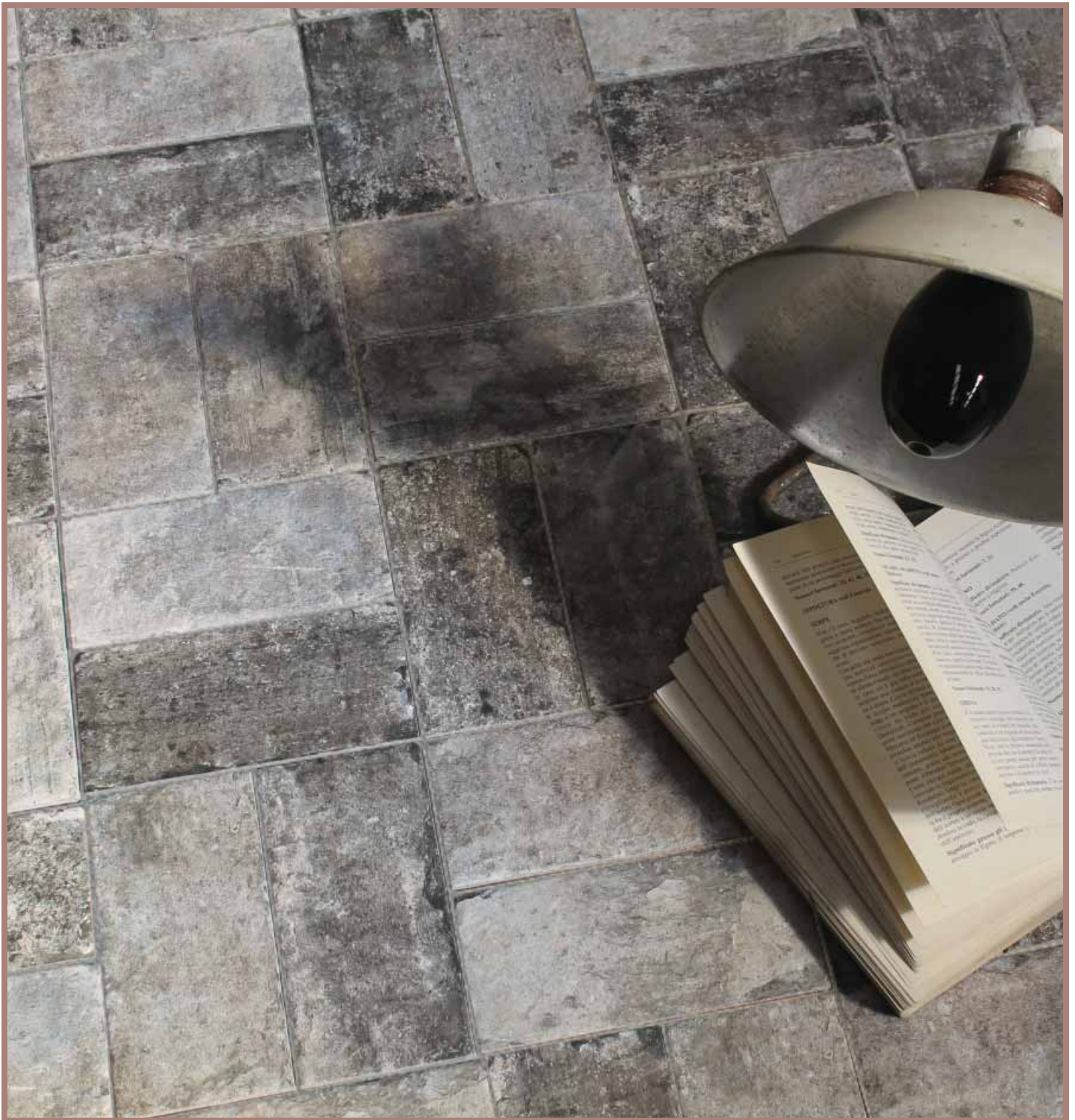


Gotham



*Inspired By Nature,
Made Possible By...*

CANCOS
TILE & STONE

"BRICK-LOOK" PORCELAIN STONEWARE

Beige



DOMGOBE48



| 4 x 8 |

"BRICK-LOOK" PORCELAIN STONEWARE

Dark Grey



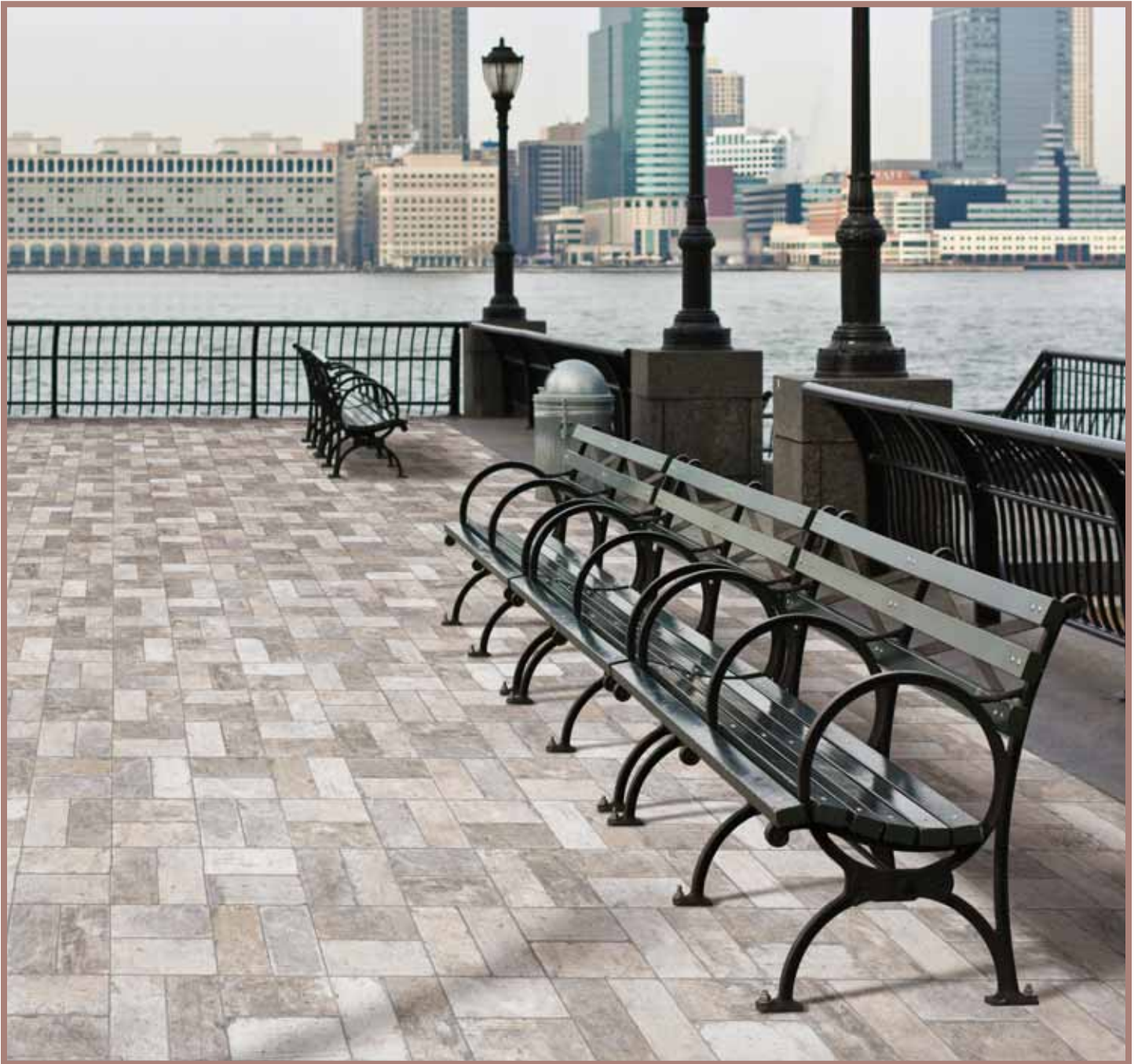
DOMGODG48



| 4 x 8 |

"BRICK-LOOK" PORCELAIN STONEWARE

Light Grey



DOMGOLG48



| 4 x 8 |

"BRICK-LOOK" PORCELAIN STONEWARE

Red



DOMGORE48



| 4 x 8 |

"BRICK-LOOK" PORCELAIN STONEWARE

White



DOMGOWH48

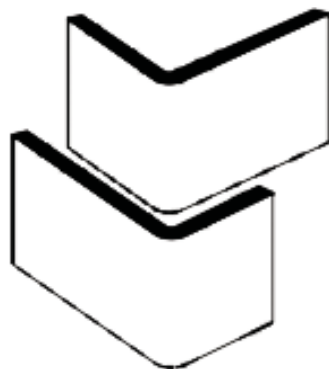


| 4 x 8 |



RED

DOMGOBEBNX
DOMGODGBNX
DOMGOLGBNX
DOMGOREBNX
DOMGOWHBNX



"L" Bullnose Corner Trim
Available in all 5 colors
| 5.5 x 2.5 |



DOMGOWHD48



| 4 x 8 |

- 26 Road Sign Designs
- Available In All 5 Colors
- Assortment Varies Per Color
- Each Box Contains a Random Mix



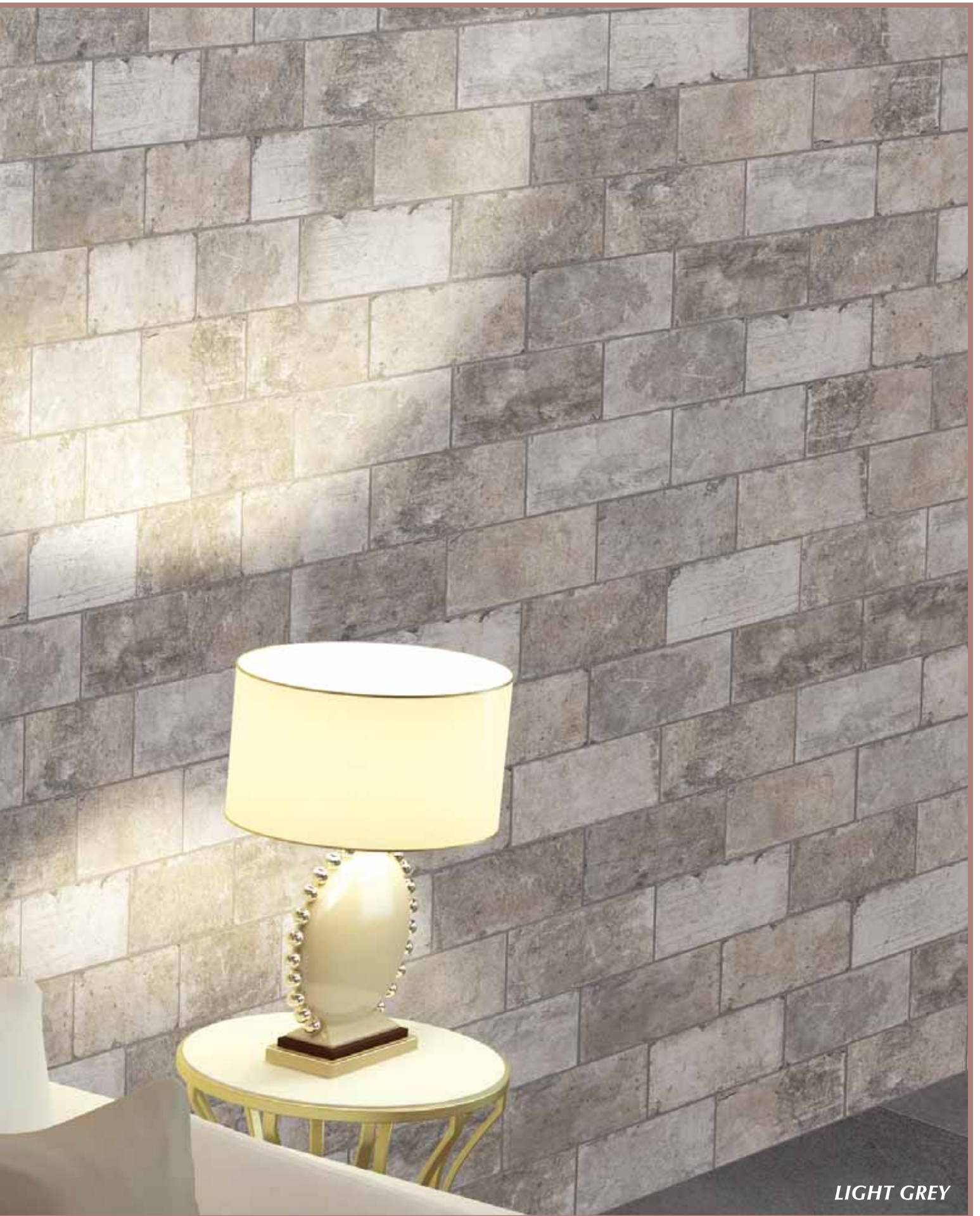
"BRICK-LOOK" PORCELAIN STONEWARE

Grotham

Beige
Dark Grey
Light Grey
Red
White

4x8
4x8 Road Sign Decos
5.5x2.5 Corner Trim





LIGHT GREY

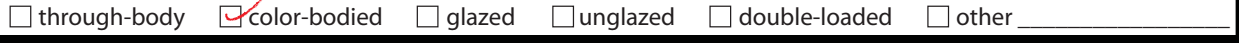
Suggested Applications



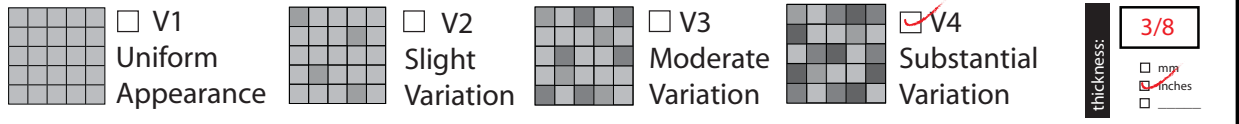
Installation Suggestions



Porcelain Type



Shade Variation



Slip Resistance

COF (coefficient of friction)				DIN 51130	DIN 51097	Class	Typical applications	Critical angle
accessible routes	standard*	WET result	DRY result	<input type="checkbox"/> R9*	3-10°	<input type="checkbox"/> A	Barefoot, but mainly dry aisles and walkways, dry changing areas	≥12°
		.6	.7	<input checked="" type="checkbox"/> R10	10-19°			
ramps	standard*	WET result	DRY result	<input type="checkbox"/> R11	19-27°	<input type="checkbox"/> B	Shower rooms, pool surrounds, wet changing areas, disinfectant spray areas (plus all Class A areas)	≥18°
		.8	.7	<input type="checkbox"/> R12	27-35°			
				<input type="checkbox"/> R13	>35°	<input checked="" type="checkbox"/> C	Areas constantly under water, e.g. steps into pools, foot baths, inclined pool surrounds, jacuzzis (plus all Class A&B areas)	≥24°

Values: 0-0.50, 0.50-0.60, >0.60. Tile Classification: Questionable, Conditionally Slip Resistant, Slip Resistant. DCOF: .42. *Industry Standard/ADA Requirements.

ASTM C-1028
DIN 51097/51130

Scratch Resistance

Mineral	Mineral
1. Talc (Talc)	6. Microline (Glass, Glazed Tile)
2. Gypsum (Fingernail)	7. Quartz (Unglazed Porcelain)
3. Calcite (Penny)	8. Topaz (Granite)
4. Flourite (Some Marbles)	9. Corundum (Ruby)
5. Apatite (Knife Blade)	10. Diamond (Diamond)

Industry standard ≤175mm²

MOH'S SCALE 8
UNI EN ISO 10545.6

Wear Resistance

- Class 1: Walls only
 - Class 2: Resid. floors w/minimal abrasive traffic.
 - Class 3: Resid. interiors normal use and foot traffic.
 - Class 4: Light-medium commercial applications.
 - Class 5: Commercial applications.
- PEI RATING UNI EN ISO 10545.7

Stain Resistance

- 5: Removed after 5 minutes (hot water running)
- 4: Removed by manual cleaning (weak detergent)
- 3: Removed by mechanical cleaning (strong detergent)
- 2: Removed by immersion (24 hrs in suitable solvent)
- 1: Stain not removed

ASTM C1378-04
UNI EN ISO 10545.14

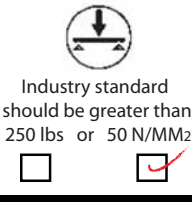
Water Absorption

ASTM C-373
UNI EN ISO 10545.3

Water Absorption	Impervious	Vitreous	Semi-Vitreous	Non-Vitreous
<input checked="" type="checkbox"/> Absorbs 0-.5%	<input type="checkbox"/> Absorbs .5-3%	<input type="checkbox"/> Absorbs 3-7%	<input type="checkbox"/> Absorbs 7% +	
Interior/exterior Frost Resistant	Interior/exterior Frost Resistant	Indoor use only	Indoor use only	

Breaking Strength

ASTM C648
UNI EN ISO 10545.4



Facial Dimension

ASTM c499-09
UNI EN ISO 10545.02

	Standard	Tolerance	Result
flatness	± 5mm	± .5%	<input checked="" type="checkbox"/>
thickness	± 6mm	± .5%	<input type="checkbox"/>
straightness	± 4.5mm	± .5%	PASS
squareness	± 5.4mm	± .6%	<input type="checkbox"/>
sides L/W	± 1.1mm ± 4.5mm	± .5%	<input type="checkbox"/>

Chemical Resistance

ASTM C650
UNI EN ISO 10545.13

Allowances for:

	result
acid	PASS
bases	PASS
chemicals	PASS

Leed Information

REQUIREMENTS FOR COMMERCIAL INTERIORS/NEW CONSTRUCTION

	1 Point	2 Points
Sustainable Sites Site selection SS CREDIT 1 Heat Island Effect-non roof Material with a solar reflectant index of at least 29.	<input type="checkbox"/>	
Energy & Atmosphere EA CREDIT 4 Green Power: Products that optimize energy performance for floors and walls using thermal conductivity. BTU-FT	<input type="checkbox"/>	
Indoor Environmental Quality Low-Emitting Materials-Flooring Systems IEQ CREDIT 3.1-7 Green Cleaning: Reducing occupants exposure to hazardous cleaning chemicals.	<input type="checkbox"/>	
IEQ CREDIT 4.1 Low Emitting Adhesives: Products less than 65 G/L VOC	<input type="checkbox"/>	
IEQ CREDIT 4.3 Low Emitting Materials: Flooring systems.	<input type="checkbox"/>	
Materials & Resources M&R CREDIT 2 Construction Waste Management: Recycling salvaged construction waste in to new reusable materials.	50% <input type="checkbox"/>	70% <input type="checkbox"/>
M&R CREDIT 4.1-4.2 Recycled Content: The sum of post consumer plus 1/2 of the pre consumer reps at least 10-20% of total value of materials.	10% <input type="checkbox"/>	20% <input type="checkbox"/>
M&R CREDIT 5 Regional Materials: Materials manufactured within 500 miles of the project site.	10% <input type="checkbox"/>	20% <input type="checkbox"/>
Innovation in Design ID CREDIT 1 Innovation in Design Measurable exemplary environmental performance.		1-5 Points <input type="checkbox"/>

Type: "Brick-Look" Porcelain Stoneware

Product Line: Gotham

The marketing name for this product is property of Cancos Tile Corp. This same product may be marketed under different names.